

 **Gourmate** *Queue*

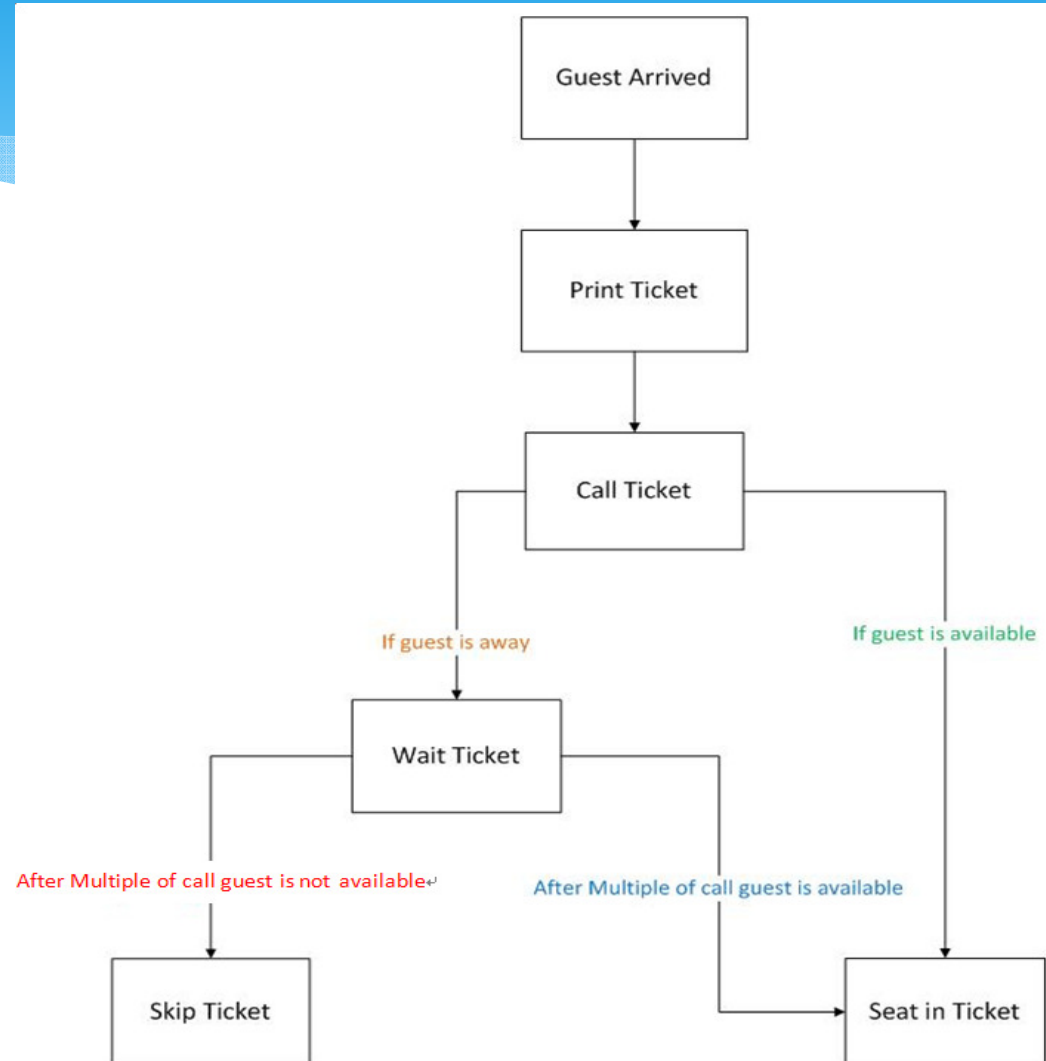
## Operation Sample - TV Board Function

- Show up-today booking event and queue situation
- Show restaurants promotion item and package
- Show Events Photos and Videos



# Operation Sample

## - Queuing Flow



# Operation Sample - Operation View

GourmateQueue - Chinese Restaurant

A1	B1	C1	D200
<b>A</b> Small (1 - 4)	<b>B</b> Medium (5 - 8)	<b>C</b> Large (9 - 16)	<b>D</b> Hot Pot (Small 1 - 4)
<b>A1</b> 4 2:06 PM (100:22)	<b>B1</b> 8 2:06 PM (100:22)	<b>C1</b> 12 2:06 PM (100:22)	<b>D200</b> 4 2:06 PM (100:22)
<b>A2</b> 4 5:39 PM (48)	<b>B2</b> 5 5:40 PM (48)	<b>C2</b> 11 5:40 PM (48)	
<b>A3</b> 2 5:40 PM (48)	<b>B3</b> 7 5:40 PM (48)		
<b>A4</b> 1 5:40 PM (48)	<b>B4</b> 5 6:28 PM (0) ★		
<b>A5</b> 2 5:40 PM (48)			
<b>A6</b> 3 5:40 PM (48)			
Waiting : 5, Called : 1	Waiting : 3, Called : 1	Waiting : 1, Called : 1	Called : 1
Call Next: A2	Call Next: B2	Call Next: C2	Not Available

Pg. 1/2  Waiting  Called  Skipped  Seat In 18:28 New Ticket B4

2011-01-31 Monday (Lunch) 6:28 PM

Issue New Ticket

Function Menu

## Operation Sample - Ticket Print Format

Lunch Small (1 - 4)

**Guests: 4**

**Table** \_\_\_\_\_

2011-02-11 1:48 PM (Wait for 6 tickets)

Enjoy your meal !

Ticket No. **A8**

# Operation Sample - TV Board Template

## Default



## Template 1



# Operation Sample - TV Board Template

## Template 2

Chinese Restaurant

INFASYS  
INFASYS INTERNATIONAL LTD.  
1992-1999-2000-2001-2002-2003-2004-2005-2006-2007-2008-2009-2010-2011-2012-2013-2014-2015-2016-2017-2018-2019-2020-2021-2022-2023-2024-2025

A2

B3

C1

D200

E201

F200

優惠(以原價計算)・於9月19日或之前逢星期五至日更可享額外95折優惠!

## Template 3

Chinese Restaurant

Gourmet Queen

A1

B1

C1

D200

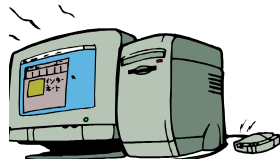
E201

F200

招牌冬瓜盅 繼多年之優勢，今年盛夏再次鮮嫩登場！清甜冬瓜盅，採用原個優

## Hardware Requirement

### Home PC



### Thermal Printer



### Speakers



**CPU:** Intel® Core2 Duo or above  
**Memory:** 4GB  
**Hard Disk:** 160GB or above  
**Display Card:** 2 x Display Card  
**OS:** MS Window 7 Pro  
**Audio:** Integrated Audio card with speaker  
**Network Interface:** 100/1000 Ethernet Card (Optional)



# System Architecture

